

A man with a mustache, wearing a purple baseball cap with 'SUMMER' on it, sunglasses, and a high-visibility yellow and green safety vest over a purple long-sleeved shirt, stands behind a wooden pallet. He is in a wood recycling facility, surrounded by large stacks of wooden pallets and beams. The background shows more wood materials and a building structure.

SAVING RESOURCES | CHANGING LIVES



Community
Wood
Recycling

ENVIRONMENTAL & SOCIAL IMPACT ANNUAL REPORT 2018-19

A year of saving resources and changing lives in the Community Wood Recycling network

In a year that saw Community Wood Recycling celebrate our 20th birthday, I remain as inspired as ever by the work carried out by our members up and down the country. We are a network of 32 independent enterprises, and the areas we serve range from inner cities facing the challenge of urban decline to rural communities where deprivation is often hidden. We are united by a desire to do everything we can to save precious resources while making life better for people who have been excluded from the workplace.

Our service is based on the principles of the circular economy; by reusing wood we are building a more sustainable society, and we promote community reuse, one of the most powerful tools available to fight waste. We work with local people, bringing men and women who are marginalised into a supportive workplace. They become part of our team and gain training and work experience as well as a sense of pride, and we see them flourish. When I visit enterprises and meet people who have moved from social isolation, loneliness and lack of confidence to paid work, shared achievements and the sense of camaraderie that comes from working together to help the environment, I am inspired by what we have achieved.

The support we have from our business partners is crucial in allowing us to carry out our mission. I would like to thank everyone who has worked with us, and I look forward to our partnership developing over the next year.

RICHARD MEHMED

MANAGING DIRECTOR, COMMUNITY WOOD RECYCLING

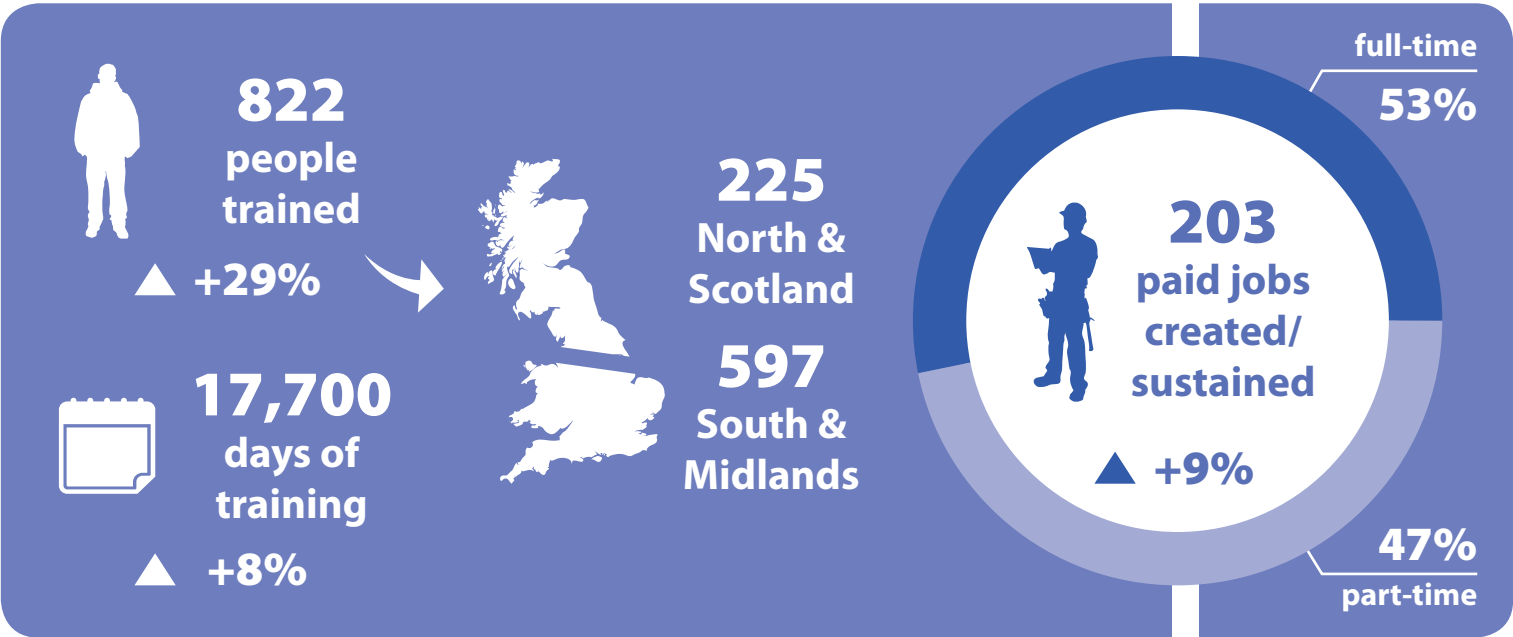
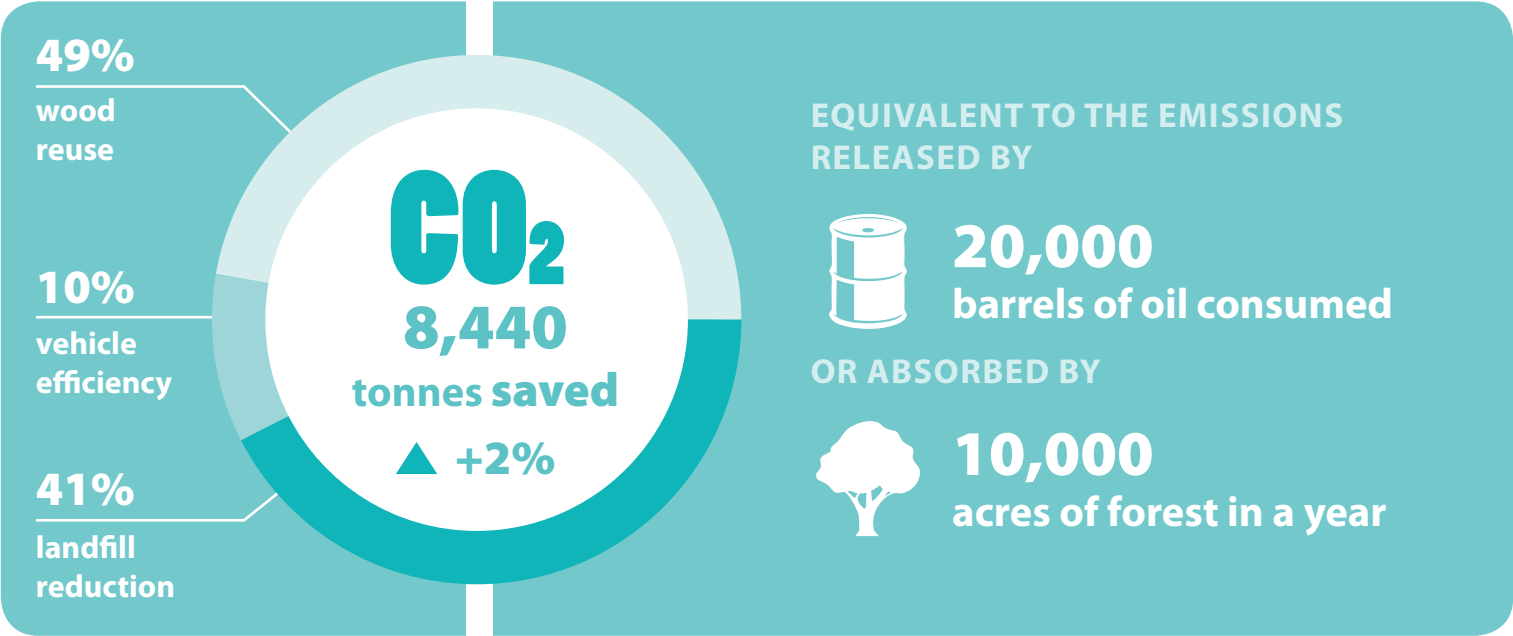
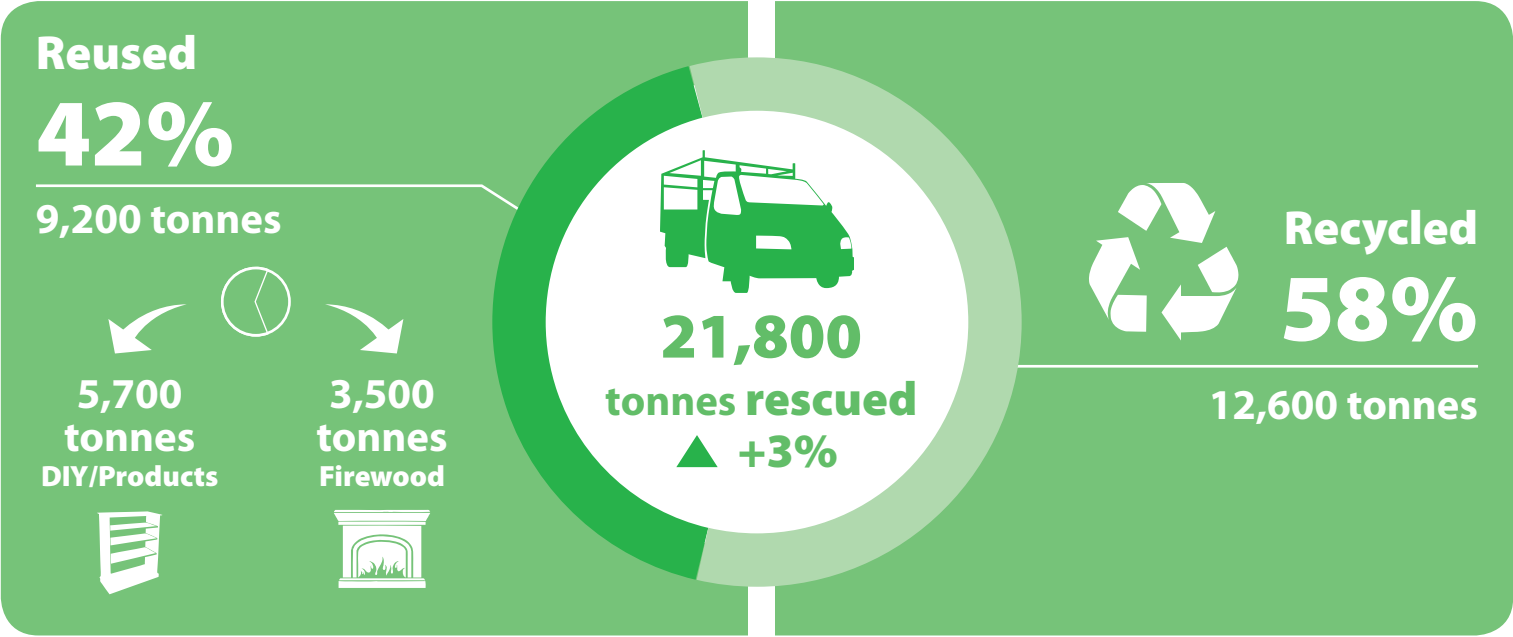
HOW COMMUNITY WOOD RECYCLING WORKS

Our aims are to save resources and create life changing opportunities for people, especially those from marginalised or disadvantaged backgrounds.

We provide the most environmentally beneficial method of dealing with waste wood, focussing as much as possible on **REUSE**. This reduces the need for virgin timber and greatly reduces the energy used and pollution produced by the felling, processing, and transporting of new wood.



All this work gives disadvantaged people the chance to develop their workplace skills



▲ = Growth compared to last year

In 2018 Leeds Wood Recycling turned this run down warehouse in the inner city into an oasis of positive change.

FROM THIS...



TO THIS!



“Leeds Wood Recycling have been so privileged to meet amazing volunteers and gain so much support from the community of Leeds in such a short space of time. We want the word to keep spreading so we can carry on saving wood from being wasted, and continue to support and empower the people that we meet along the way.”

CHARLOTTE STANLEY
ENTERPRISE MANAGER, LEEDS WOOD RECYCLING



In its first year the enterprise is already making a difference in the local community, running woodwork courses targeted at people who are at risk of social isolation. Loneliness can have a very harmful effect on mental and physical health. For people who are not in work, low self-esteem can build, making it hard to see a way forward. Countering these feelings, especially for people who have not had a positive experience of formal education, is not easy.

At Leeds Wood Recycling, manager Charlotte Stanley and the team have created a warm welcoming atmosphere where trainees develop their confidence through practical instruction and volunteering in the wood store. Shared lunches for everyone at the project help build a feeling of community. Course members develop their skills, from making chopping boards at the start of the course to designing and building a piece of furniture to sit on from a single pallet at the end. They also earn a national certificate to recognise their learning in health and safety, understanding wood, use of tools and retail.

THE NATIONAL COMMUNITY WOOD RECYCLING PROJECT

LETSRECYCLE.COM AWARDS FOR
EXCELLENCE
2018 **WINNER**

WOOD RECYCLING BUSINESS OF THE YEAR
LETSRECYCLE.COM AWARDS FOR EXCELLENCE 2018



FINALIST: RESILIENCE AWARD
UK SOCIAL ENTERPRISE AWARDS 2019

OXFORD WOOD RECYCLING



CLEAN & GREEN AWARD
JACK'S BRICK AWARD 2018



SOCIAL RESPONSIBILITY AWARD
VALE 4 BUSINESS AWARD 2018

GLASGOW WOOD RECYCLING



SUSTAINABILITY AWARD
CITI MICROENTREPRENEURSHIP AWARDS 2019

RESEICLO WOOD RECYCLING



ENVIRONMENTAL AWARD
SOCIAL BUSINESS WALES AWARDS 2018

BRISTOL WOOD RECYCLING



CROWDFUNDED PREMISES

Bristol Wood Recycling Project secured their future with the support of their local community by raising enough money to buy their premises through a crowdfunded bond offer.

EMERGE TOUCH WOOD



RECOVERED HISTORIC VELODROME TRACK

EMERGE in Manchester worked with ISG plc to save the historic track of Manchester's HSBC UK National Cycling Centre for reuse when it was replaced as part of the velodrome's refurbishment.

NEW ENTERPRISES

LEEDS WOOD RECYCLING LTD LEEDS

Leeds Wood Recycling joined the network in September 2018. Based in inner city Leeds, their wood store is already inspiring local people with a wonderful stock of reclaimed wood and handmade products. Their volunteering programme is bringing the local community together to help save resources for the good of our planet.

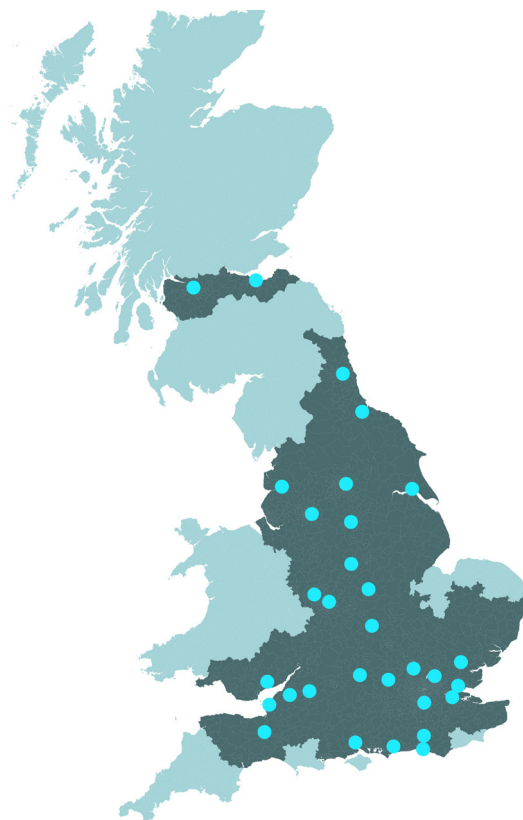
MOVE ON WOOD RECYCLING EDINBURGH

In December 2018 Community Wood Recycling came to Scotland's capital. Set up by Scottish charity Move On, this social enterprise has developed Building Brighter Futures, an eight-week employability course for unemployed young people who are interested in gaining qualifications and skills in a wood workshop. The course allows trainees to achieve employment-focused accreditation, certification and practical work experience. Move On Wood Recycling also provide ongoing support to help young people achieve the next step on their employment journey.

NEW LIFE WOOD BASILDON

In August 2018 we welcomed Basildon-based New Life Wood to the network. This enterprise was set up by a group of local people with a mission to provide opportunities for those they could see were struggling with the challenge of finding a place in the workplace, particularly ex-offenders and people with mental health problems. They support their volunteers by offering training, mentoring and help with money management skills.

OUR NATIONAL NETWORK



HOW YOU CAN HELP



There are many ways to help us in our ongoing efforts!

If you are in an industry generating wood waste, you can help promote our wood collection services in your organisation. If you have time available, you can volunteer with us, and if you're looking for wood for a DIY or building project, or for furniture, decorations or gifts, please consider buying sustainably from one of our enterprises, where you'll find an Aladdin's cave of reclaimed timber.

Find out more at:

www.communitywoodrecycling.org.uk

Or call our national office on:

01273 20 30 40